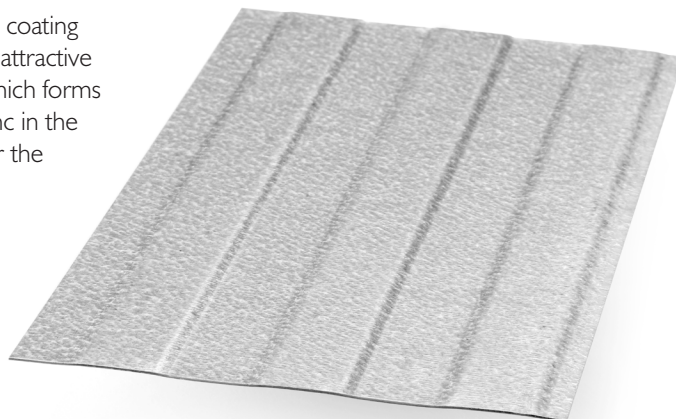


Aluzinc's 55% aluminium, 43.4% zinc and 1.6% silicon double sided coating is applied in a continuous hot dip galvanising process that creates the attractive characteristic spangled silver finish, a thin layer of aluminium oxide which forms on the top surface preserves the appearance for many years. The zinc in the coating provides 'self-healing' sacrificial cathodic protection whenever the steel substrate is exposed.

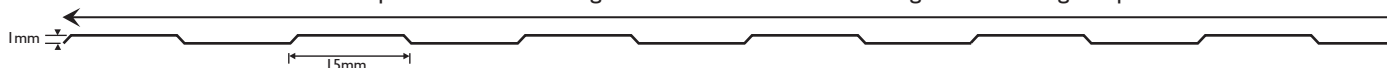
For increased rigidity, often helpful on large diameter pipe-work insulation jacketing and ducting projects, our shallow Petrochem ZX® profile can be added to either Dobelshield® embossed finish or flat finish as required. This profile often enables a lighter gauge to be used (0.1mm/0.3 mm thinner) without loss of rigidity, saving on weight and cost.



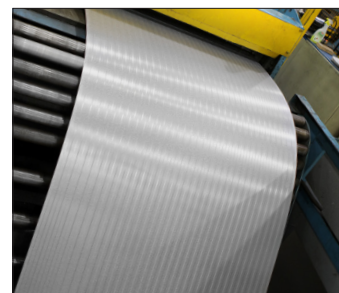
All insulation fabrications, including flange cases are still easy to mechanically fabricate with our Petrochem ZX® Profile.

Petrochem ZX® clad insulated pipes have been independently Fire Tested to demonstrate that Petrochem ZX® jacketing will withstand a typical hydrocarbon fire....during the 30 minute test Petrochem ZX® remained intact protecting the insulation and pipework.

Our Petrochem ZX profile increases strength with no loss of overall coverage - 66 stiffening ribs per metre



DESCRIPTION	BS EN10346:2015 - Hot Dip, Double-Sided Coated Steel						
PROPERTIES	<p>Excellent corrosion resistance - <i>the zinc in the coating provides 'self-healing' sacrificial cathodic protection whenever the steel substrate is exposed (e.g. by accidental cuts or scratches).</i></p> <p>Excellent fire resistance without toxic fumes.</p> <p>Attractive appearance - <i>bright 'Spangle' finish with anti fingerprint coating (1 micron).</i></p> <p>Excellent thermal and light reflectivity.</p> <p>Good abrasion resistance.</p> <p>Generates no particular environmental hazards.</p>						
COATING ANALYSIS	<p>185 g/m<sup>2</sup> coating - equally distributed over both sides.</p> <p>Approx 25 microns each side.</p> <table> <tr> <td>Aluminium</td> <td>55%</td> </tr> <tr> <td>Zinc</td> <td>43.1%</td> </tr> <tr> <td>Silicon</td> <td>1.6%</td> </tr> </table>	Aluminium	55%	Zinc	43.1%	Silicon	1.6%
Aluminium	55%						
Zinc	43.1%						
Silicon	1.6%						
MECHANICAL PROPERTIES	<p>Thicknesses available 0.4, 0.5, 0.6 &amp; 0.7mm.</p> <p>Width 1000mm (with 1250mm available to order).</p> <p>Cut sheets from 0.5 metres long to 5 metres long.</p> <p>Manufactured to ISO 9001 :2015 Quality Assurance Standard Certificate.</p> <p>ZX profile can be recoiled to measured length.</p>						



The performances indicated are averages and may vary in particular according to the type of support used. These data are not contractual and may be amended in line with technological progress relating to the product.